

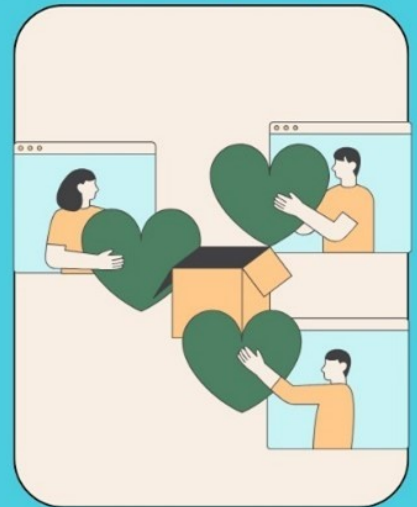
Seeking Carers



We want to find out about your experience of engaging with online support groups. Therefore, we are asking you to participate in our study to identify how online support groups can be improved specifically for Parkinson's Disease (PD) carers. We want to hear and learn about your experience of using online support groups.

What is involved?

The research study involves taking part in either an online questionnaire or an online interview. You will be given the option to choose which design is most appropriate. Interviews will be conducted at a mutually convenient time and is expected to last between 40 minutes to an hour. Online questionnaires should take around 20 minutes.



Study Requirements

You must be:

- Carer of someone with PD
- Currently use or previously used an online support group for carers of people with PD
- Be over the age of 18
- English speaking



If you are interested in participating or would like further information please contact:

Emily Reed
msxer14@nottingham.ac.uk



**University of
Nottingham**
UK | CHINA | MALAYSIA

Your contribution is highly valued and any time given to our study will be greatly appreciated. However, participation is entirely voluntary.